

sjeverozapadno pročelje

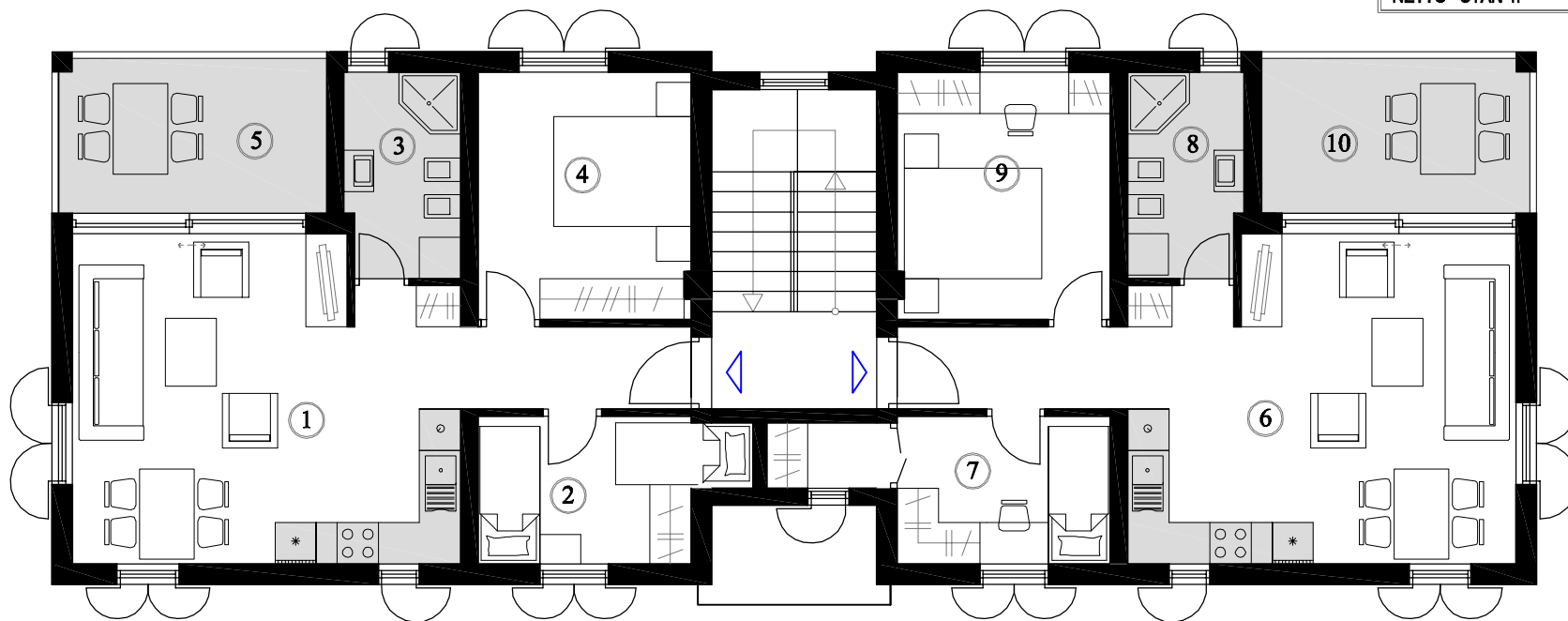


**STAN 3:**

1.	dn.br + kuh. + hodnik	parket/ker.pločice	30,06 m <sup>2</sup>
2.	sp. soba	parket	7,34 m <sup>2</sup>
3.	kupaonica	ker. pločice	4,92 m <sup>2</sup>
4.	sp. soba	parket	11,16 m <sup>2</sup>
5.	terasa	ker. pločice	9,10x 0,5 = 4,50 m <sup>2</sup>
<b>NETTO STAN 3:</b>			<b>57,98 m<sup>2</sup></b>

**STAN 4:**

6.	dn.br + kuh. + hodnik	parket	30,06 m <sup>2</sup>
7.	sp. soba	parket	8,34 m <sup>2</sup>
8.	kupaonica	ker. pločice	4,92 m <sup>2</sup>
9.	sp. soba	parket	11,16 m <sup>2</sup>
10.	terasa	ker. pločice	9,10x 0,5 = 4,50 m <sup>2</sup>
<b>NETTO STAN 4:</b>			<b>58,98 m<sup>2</sup></b>



STAN 3

STAN 4