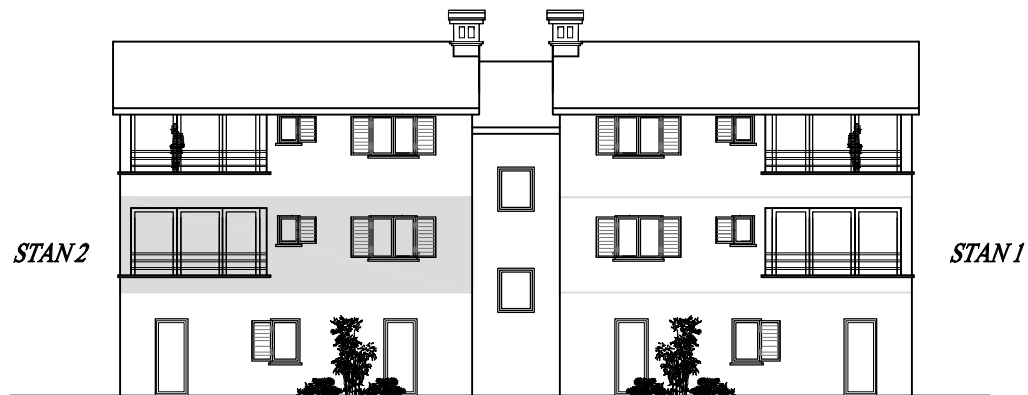
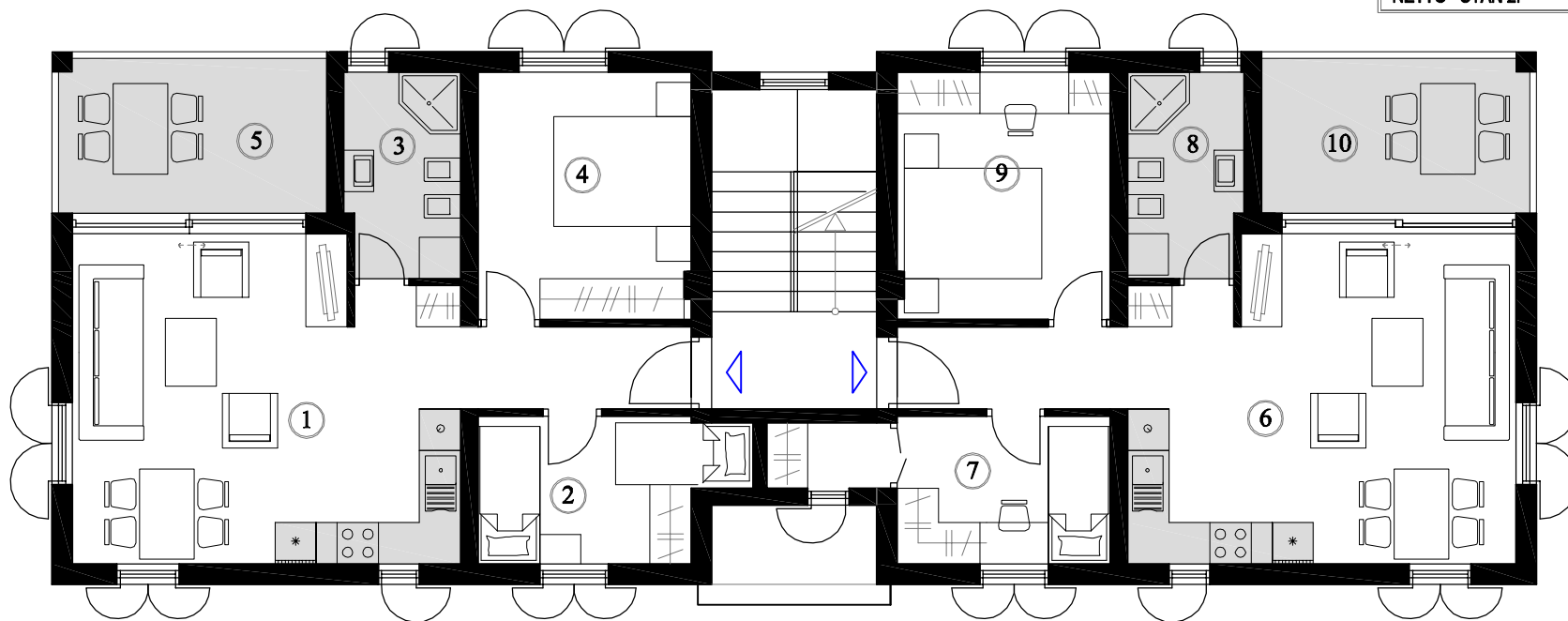


sjeverozapadno pročelje



STAN 1:			
1.	dn.br + kuh. + hodnik	parket/ker.pločice	30,06 m ²
2.	sp. soba	parket	7,34 m ²
3.	kupaonica	ker. pločice	4,92 m ²
4.	sp. soba	parket	11,16 m ²
5.	terasa	ker. pločice	9,10x 0,5 = 4,50 m ²
NETTO STAN 1:			57,98 m ²

STAN 2:			
6.	dn.br + kuh. + hodnik	parket	30,06 m ²
7.	sp. soba	parket	8,34 m ²
8.	kupaonica	ker. pločice	4,92 m ²
9.	sp. soba	parket	11,16 m ²
10.	terasa	ker. pločice	9,10x 0,5 = 4,50 m ²
NETTO STAN 2:			58,98 m ²



STAN 1

STAN 2

